


TROYAUSTEN

REAL ESTATE TEAM

RE/MAX Professionals North Brokerage
Independently Owned & Operated

 LOT 4 - 484 FEET OF SHORELINE,
3.9 ACRES

 LOT 5 - 931 FEET OF SHORELINE,
12.8 ACRES

 1005 MURRAYS RD, 4 SEASON
COTTAGE. 431 RD, FEET OF
SHORELINE, 30.5 ACRES

\$399,000 + HST

Welcome to

Lot 5 Gonnensen Tr on Drag Lake, Haliburton



Troy Austen

Sales Representative

Rare opportunity to own a large vacant waterfront parcel on sought-after Drag Lake. Offering approximately 12.8 acres and an impressive 931 feet of shoreline, this property provides exceptional privacy, expansive lake views, and endless potential for your future cottage or year-round home. With substantial frontage and acreage, the property offers plenty of space to design and build while enjoying the natural beauty and peaceful surroundings of the Haliburton Highlands.

CONTACT DETAILS:

 705-457-9994  info@troyausten.ca
 705-455-7653  troyausten.ca

Property Client Full

Lot 5 Gonnsen Trail, Dysart, Ontario K0M 1S0

Listing

[Lot 5 Gonnsen Tr Dysart](#)

Active / Residential Freehold / Vacant Land

MLS®#: X13149864

List Price: **\$399,000**

New Listing

Haliburton/Dysart et al/Dudley



Tax Amt/Yr: **\$4,689.85/2026**

SPIS: **No**

Legal Desc: **See attached Schedule**

Transaction: **Sale**

DOM: **0/0**

Style:

Fractional Ownership:

Assignment:

Link:

Storeys:

Lot Front: **931.00**

Lot Depth: **685.00**

Lot Size Code: **Feet**

Zoning: **WR6L**

Dir/Cross St: **118E to Kennaway Road to Fred Jones Road to Murrays Road and follow to Gonnsen Trail**

Rooms Rooms+: **+0**

BR BR+: **0(+0)**

Baths (F+H): **0(0+0)**

SF Range:

SF Source:

Fronting On: **N**

Builder Name:

PIN #: **392630433**

Holdover: **60**

Possession: **Flexible**

ARN #: **462401000062725**

Possession Date:

Contact After Exp: **No**

Survey Year/Type: **Available**

Kitch Kitch + **0 (0+)**

Heat Source:

Central Vac: **No**

Property Feat:

Soil Type:

Alternate Power: **None**

Garage:

Room Size:

Rural Services:

Security Feat:

Utilities:

No Gas, No Hydro, No Sewers, No Cable, No Telephone

Water Supply Type:

Water Meter:

Waterfront Feat:

Waterfront Struc:

Well Capacity:

Well Depth:

Special Desig:

Farm Features:

Winterized:

Not Applicable

Not Applicable

Unknown

Water Name: **Drag Lake**

Waterfront Y/N: **Yes**

Water Struct: **Not Applicable**

Water Features: **Not Applicable**

Under Contract:

Access To Property: **Private Road**

Shoreline: **Clean, Deep**

Shoreline Road Allowance: **Not Owned**

Docking Type: **None**

Waterfront: **Direct**

Easements/Restr: **Unknown**

Dev Charges Paid:

Shoreline Exposure:

Water View: **Obstructive**

Island YN: **No**

HST App To SP: **In Addition To**

Channel Name:

Remarks/Directions

Client Rmks: **Rare opportunity to own a large vacant waterfront parcel on sought-after Drag Lake. Offering approximately 12.8 acres and an impressive 931 feet of shoreline, this property provides exceptional privacy, expansive lake views, and endless potential for your future cottage or year-round home. With substantial frontage and acreage, the property offers plenty of space to design and build while enjoying the natural beauty and peaceful surroundings of the Haliburton Highlands. The varied landscape and extensive shoreline create an ideal setting for those looking for privacy and a true waterfront experience. Drag Lake is known for its deep clean water, excellent boating, swimming, and fishing, making it one of the premier lakes in the area. Whether you are looking to create a private family retreat or secure a large waterfront investment property, this parcel offers a rare combination of size, frontage, and location.**

Listing Contracted With: **RE/MAX Professionals North 705-457-1011**

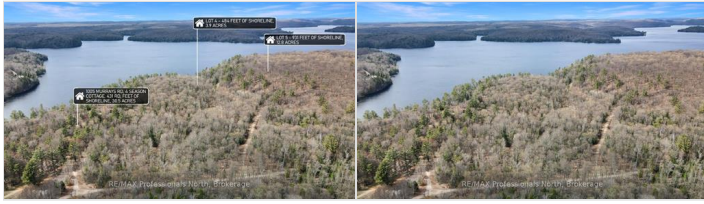
Prepared By: **TROY AUSTEN, REALTOR Salesperson**

Date Prepared: **05/20/2026**

Photos

MLS®#: X13149864

[Lot 5 Gonnsen Trail, Dysart, Ontario K0M 1S0](#)



PropTx Innovations Inc. assumes no responsibility for the accuracy of any information shown. Copyright PropTx Innovations Inc. 2026

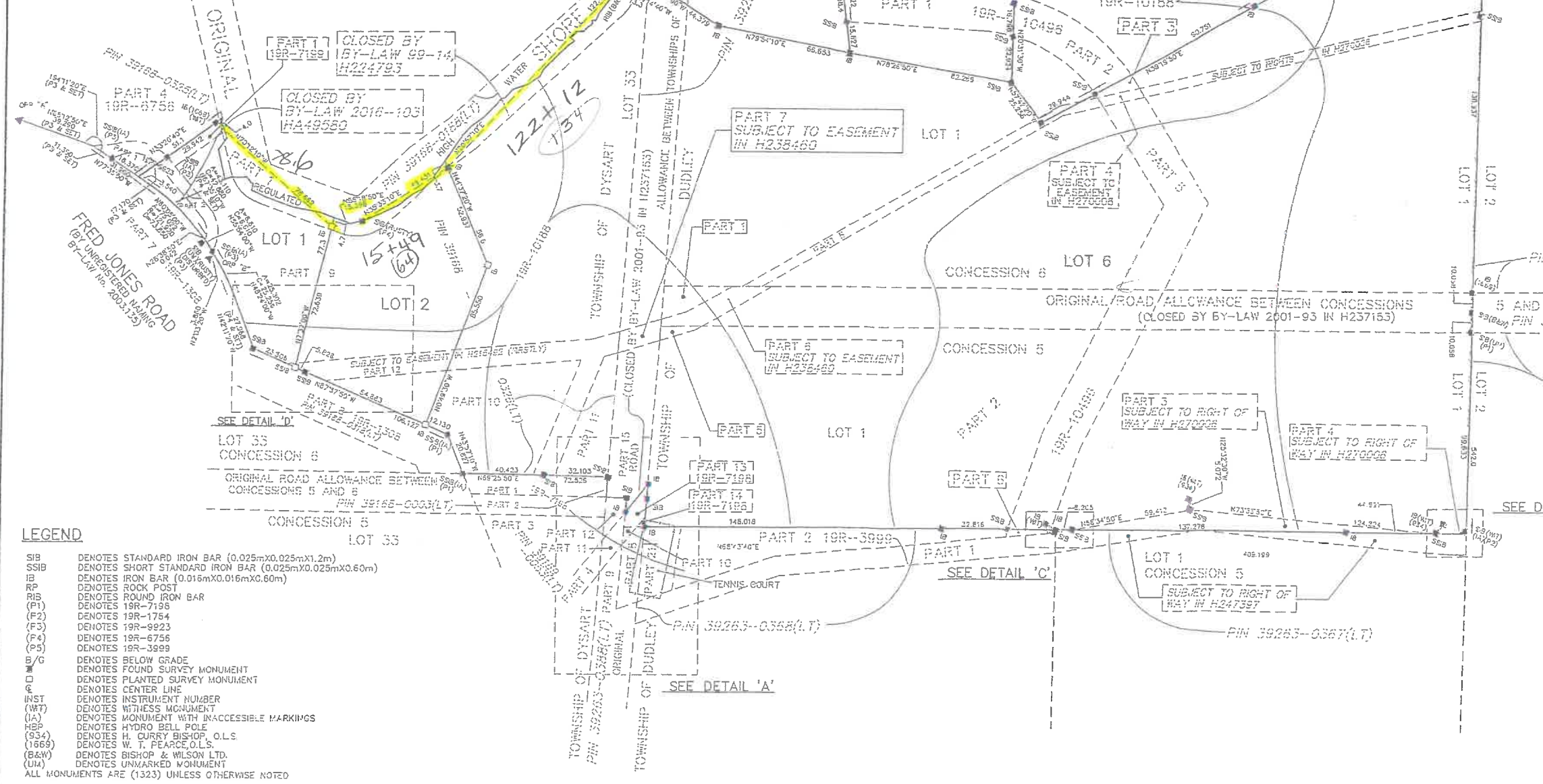
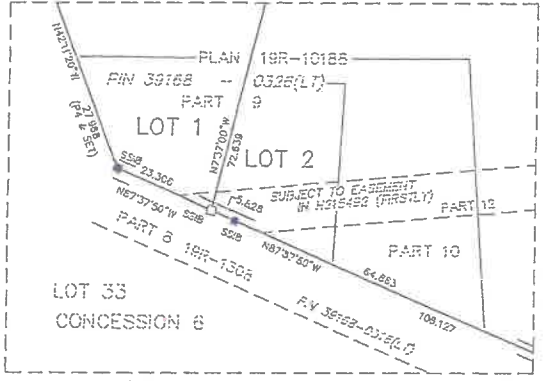
42°37'	317.1	52°15'	15.5	195°45'	180.0	199°27'	258.0	210°19'	356.2	222°10'	102.4	225°13'	75.4
42°40'	315.5	52°34'	145.4	195°36'	162.3	199°30'	263.7	210°35'	358.8	222°12'	39.6	225°18'	68.1

COORDINATE TABLE

MEAN COORDINATE TABLE (UTM GRID NAD83 CSRS EPOCH 2010)
(DERIVED FROM PLAN 19R-9923)

POINT ID	NORTHING	EASTING	DESCRIPTION
ORP 'A'	4991731.762	703034.577	SSIB
ORP 'B'	4991706.140	703150.528	SPIKE

ALL MEAN COORDINATES ARE IN METRES, ARE RELATED TO UTM ZONE 17 (81°00'W LONGITUDE) NAD83 CSRS AND HAVE A RELATIVE ACCURACY TO MEET THE REQUIREMENTS OF (RURAL) AREA AT A 95% CONFIDENCE LEVEL. THE COORDINATES CANNOT, IN THEMSELVES, BE USED TO RE-ESTABLISH THE CORNERS OR BOUNDARIES SHOWN ON THE PLAN.



- LEGEND**
- SSIB DENOTES STANDARD IRON BAR (0.025mX0.025mX1.2m)
 - SSIB DENOTES SHORT STANDARD IRON BAR (0.025mX0.025mX0.60m)
 - IB DENOTES IRON BAR (0.016mX0.016mX0.60m)
 - RP DENOTES ROCK POST
 - RIS DENOTES ROUND IRON BAR
 - (P1) DENOTES 19R-7196
 - (F2) DENOTES 19R-1754
 - (F3) DENOTES 19R-9923
 - (F4) DENOTES 19R-6756
 - (P5) DENOTES 19R-3999
 - B/G DENOTES BELOW GRADE
 - DENOTES FOUND SURVEY MONUMENT
 - DENOTES PLANTED SURVEY MONUMENT
 - DENOTES CENTER LINE
 - INST DENOTES INSTRUMENT NUMBER
 - (WT) DENOTES WITNESS MONUMENT
 - (IA) DENOTES MONUMENT WITH INACCESSIBLE MARKINGS
 - HBP DENOTES HYDRO BELL POLE
 - (934) DENOTES H. CURRY BISHOP, O.L.S.
 - (1669) DENOTES W. T. PEARCE, O.L.S.
 - (B&W) DENOTES BISHOP & WILSON LTD.
 - (UM) DENOTES UNMARKED MONUMENT
- ALL MONUMENTS ARE (1323) UNLESS OTHERWISE NOTED

BETWEEN THE TOWNSHIPS OF DYSART AI
(CLOSED BY BY-LAW 2001-93 IN H237153)
NOW IN THE
MUNICIPALITY OF DYSART ET
COUNTY OF HALIBURTON

SCALE 1 : 1500
0 3 15 30 75 120 METRES

C. D. BUNKER, O.L.S.
2019

BEARINGS ARE ASTRONOMIC AND ARE DERIVED FROM THE EASTERLY LIMIT OF PARTS 1 AND 2 PLAN 19R-10188 HAVING A BEARING OF N20°51'W.

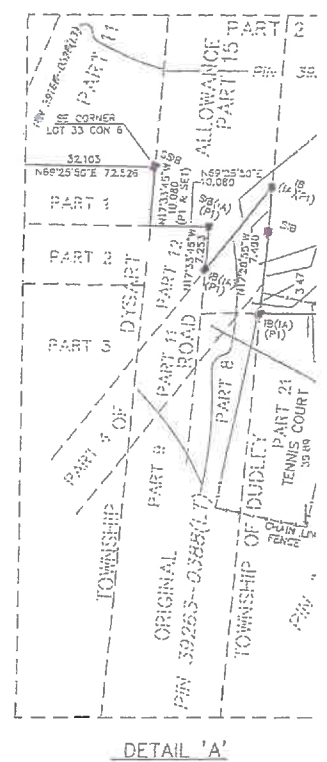
METRIC
DISTANCES AND COORDINATES SHOWN ON THIS PLAN ARE IN METRES AND CAN BE CONVERTED TO FEET BY DIVIDING BY 0.3048.

DISTANCES ON THIS PLAN ARE HORIZONTAL GROUND DISTANCES AND CAN BE CONVERTED TO GRID DISTANCES BY MULTIPLYING BY THE AVERAGE COMBINED SCALE FACTOR OF 1.0000560

SUBDIVISION FINAL APPROVAL STAMP

APPROVED UNDER SECTION 51 OF THE PLANNING ACT,
THIS 17 DAY OF April, 2021.

STEPHEN STONE, DIRECTOR OF PLANNING
COUNTY OF HALIBURTON



100.786
PIN 39263-0372(LT)
PIN 39263-0376(LT)
PIN 39263-0378(LT)
PIN 39263-0386(LT)
PIN 39263-0388(LT)
PIN 39263-0389(LT)
PIN 39263-0397(LT)
PIN 39263-0398(LT)
PIN 39263-0399(LT)
PIN 39263-0400(LT)
PIN 39263-0401(LT)
PIN 39263-0402(LT)
PIN 39263-0403(LT)
PIN 39263-0404(LT)
PIN 39263-0405(LT)
PIN 39263-0406(LT)
PIN 39263-0407(LT)
PIN 39263-0408(LT)
PIN 39263-0409(LT)
PIN 39263-0410(LT)
PIN 39263-0411(LT)
PIN 39263-0412(LT)
PIN 39263-0413(LT)
PIN 39263-0414(LT)
PIN 39263-0415(LT)
PIN 39263-0416(LT)
PIN 39263-0417(LT)
PIN 39263-0418(LT)
PIN 39263-0419(LT)
PIN 39263-0420(LT)
PIN 39263-0421(LT)
PIN 39263-0422(LT)
PIN 39263-0423(LT)
PIN 39263-0424(LT)
PIN 39263-0425(LT)
PIN 39263-0426(LT)
PIN 39263-0427(LT)
PIN 39263-0428(LT)
PIN 39263-0429(LT)
PIN 39263-0430(LT)
PIN 39263-0431(LT)
PIN 39263-0432(LT)
PIN 39263-0433(LT)
PIN 39263-0434(LT)
PIN 39263-0435(LT)
PIN 39263-0436(LT)
PIN 39263-0437(LT)
PIN 39263-0438(LT)
PIN 39263-0439(LT)
PIN 39263-0440(LT)
PIN 39263-0441(LT)
PIN 39263-0442(LT)
PIN 39263-0443(LT)
PIN 39263-0444(LT)
PIN 39263-0445(LT)
PIN 39263-0446(LT)
PIN 39263-0447(LT)
PIN 39263-0448(LT)
PIN 39263-0449(LT)
PIN 39263-0450(LT)
PIN 39263-0451(LT)
PIN 39263-0452(LT)
PIN 39263-0453(LT)
PIN 39263-0454(LT)
PIN 39263-0455(LT)
PIN 39263-0456(LT)
PIN 39263-0457(LT)
PIN 39263-0458(LT)
PIN 39263-0459(LT)
PIN 39263-0460(LT)
PIN 39263-0461(LT)
PIN 39263-0462(LT)
PIN 39263-0463(LT)
PIN 39263-0464(LT)
PIN 39263-0465(LT)
PIN 39263-0466(LT)
PIN 39263-0467(LT)
PIN 39263-0468(LT)
PIN 39263-0469(LT)
PIN 39263-0470(LT)
PIN 39263-0471(LT)
PIN 39263-0472(LT)
PIN 39263-0473(LT)
PIN 39263-0474(LT)
PIN 39263-0475(LT)
PIN 39263-0476(LT)
PIN 39263-0477(LT)
PIN 39263-0478(LT)
PIN 39263-0479(LT)
PIN 39263-0480(LT)
PIN 39263-0481(LT)
PIN 39263-0482(LT)
PIN 39263-0483(LT)
PIN 39263-0484(LT)
PIN 39263-0485(LT)
PIN 39263-0486(LT)
PIN 39263-0487(LT)
PIN 39263-0488(LT)
PIN 39263-0489(LT)
PIN 39263-0490(LT)
PIN 39263-0491(LT)
PIN 39263-0492(LT)
PIN 39263-0493(LT)
PIN 39263-0494(LT)
PIN 39263-0495(LT)
PIN 39263-0496(LT)
PIN 39263-0497(LT)
PIN 39263-0498(LT)
PIN 39263-0499(LT)
PIN 39263-0500(LT)

Drag Lake Lot 5



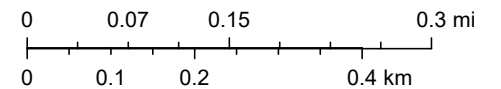
May 11, 2026

Copyright by the County of Haliburton, Minden, Ontario, 2025.
This publication may not be reproduced in any form, in part or in whole, without written permission.

Published by the County of Haliburton, 2025.



Scale: 1:9,028





Drag Lake

Haliburton County

Dudley and Dysart Townships

Physical Data

Surface Area - 2,477 acres

Perimeter - 26.1 miles

Maximum Depth - 180 ft

Mean Depth - 59 ft

Lake Characteristics

Drag Lake is a fairly large waterbody, the bottom consisting of three basins. Water colour is blue-green and very clear, indicated by the disappearance of the secchi disc from view 21 ft from the surface. Susceptible to acid rain.

Fish Species Present

Lake trout, brook trout, lake herring, smallmouth bass, rock bass, longnose sucker, white sucker, pumpkinseed, fathead minnow, finescale dace, brook stickleback, golden shiner, common shiner.

Drag Lake is predominantly a lake trout - smallmouth bass fishery. Lake trout are taken during the ice fishing period by using minnows and jigging with artificial lures. Trolling is the usual way of catching lake trout during open water season. Small mouth bass are angled by means of still fishing and spin casting, usually along the rocky shoreline and in the shallower bays. Will be open Jan 1/02 for ice fishing. Slot size, check with MNR for current regulations.

Access

Drag Lake is located 8 km east of Haliburton on Hwy 121 and can be reached via Kenneway Rd. Boat launching sites are located at Kenneway Rd.

