



\$479,000

Welcome to

1011 Tadmore Trail

on Outlet Bay, Haliburton




Troy Austen

Sales Representative

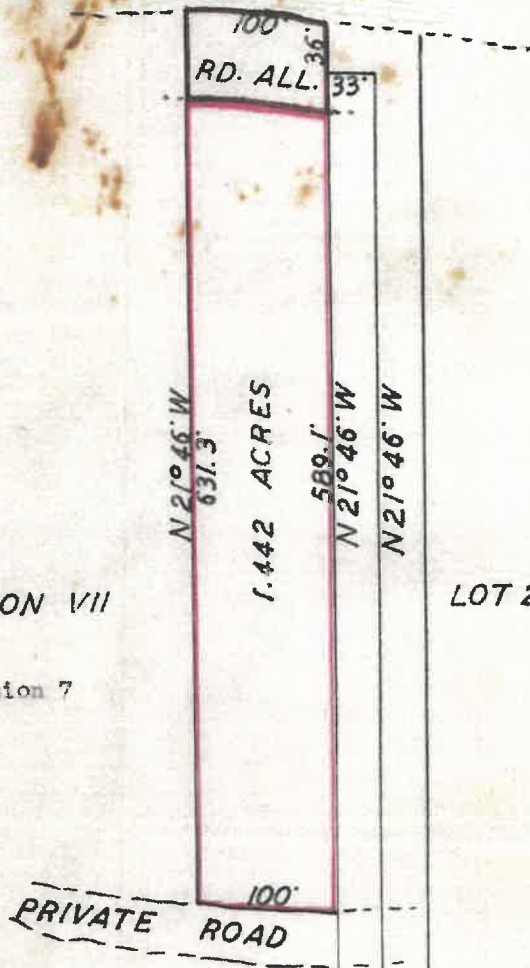


CONTACT DETAILS:

 705-457-9994  info@troyausten.ca
 705-455-7653  troyausten.ca

DY4685

MUD LAKE



LOT 25 CON VII

LOT 26

Plan Showing Part of Lot 25 Concession 7

Township of Dysart

Provisional County of Haliburton

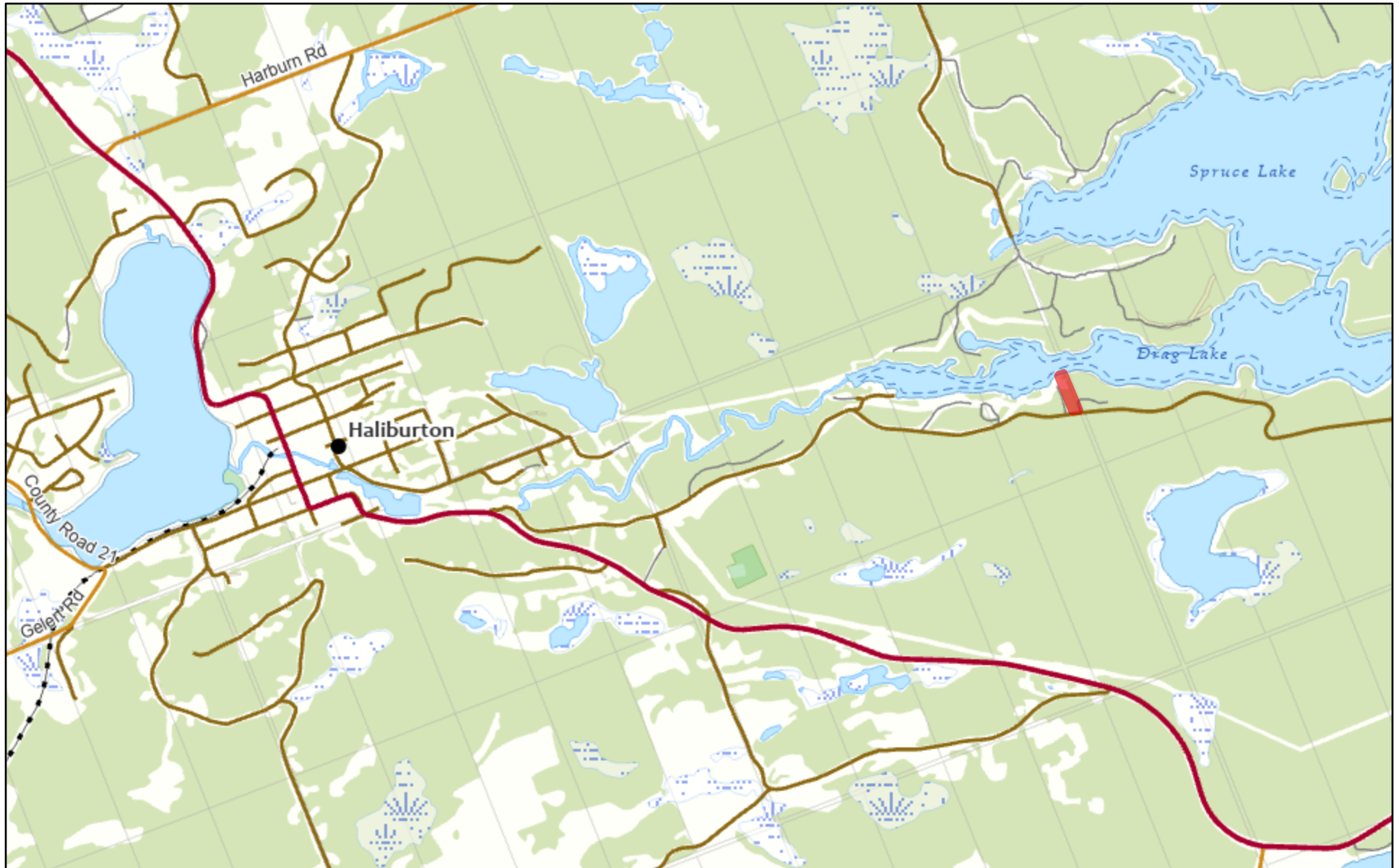
Scale;- 1 inch = 100 feet

J. J. Nicholas

Ontario Land Surveyor
Haliburton 8 October 1954.

CON VII 33 33
CON VI

1011 Tadmore Trail, Outlet Bay



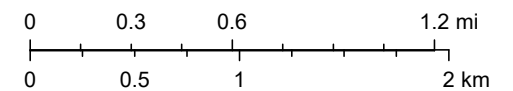
June 25, 2024

Copyright by the County of Haliburton, Minden, Ontario, 2023.
This publication may not be reproduced in any form, in part or in whole, without written permission.

Published by the County of Haliburton, 2023.



Scale: 1:36,112



1011 Tadmore Trail, Outlet Bay



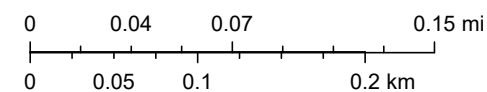
June 25, 2024

Copyright by the County of Haliburton, Minden, Ontario, 2023.
This publication may not be reproduced in any form, in part or in whole, without written permission.

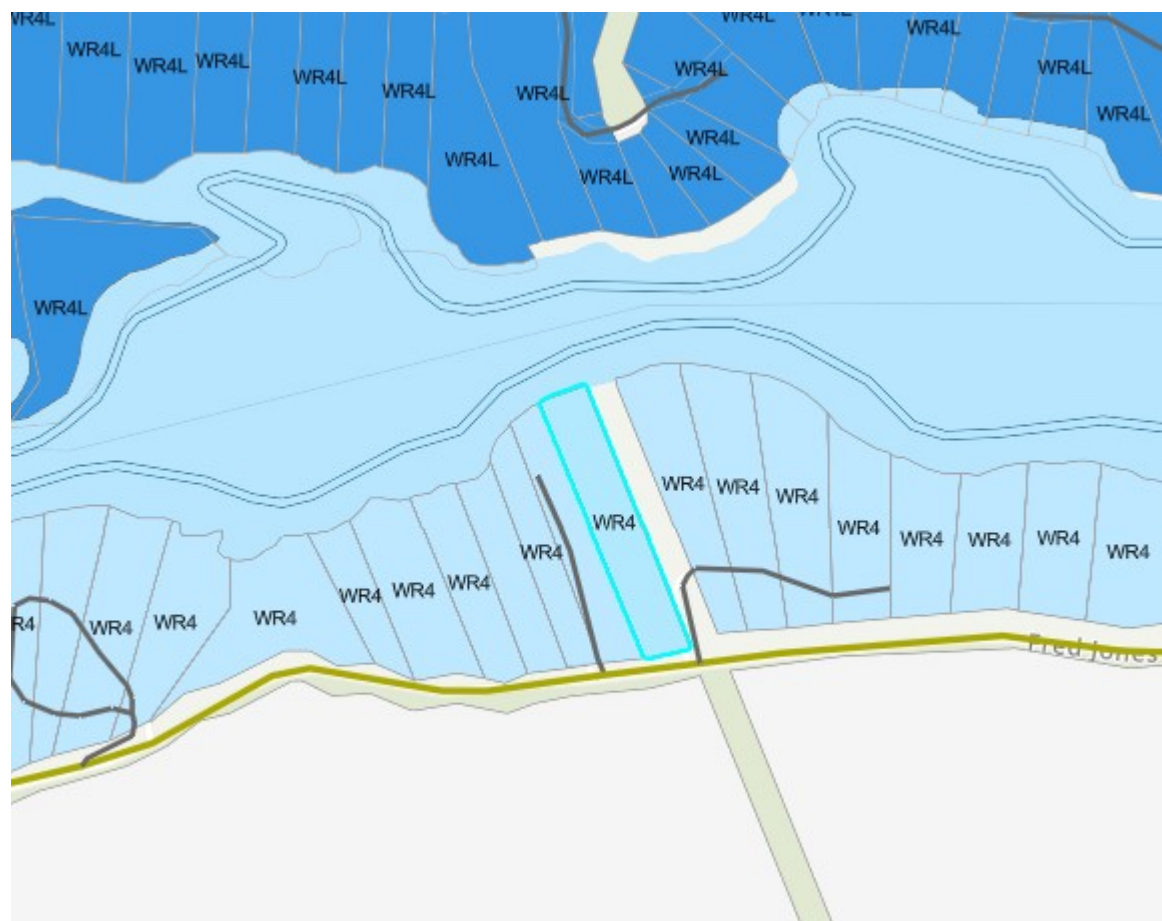
Published by the County of Haliburton, 2023.



Scale: 1:4,514







Drag Lake

Haliburton County

Dudley and Dysart Townships

Physical Data

Surface Area - 2,477 acres

Perimeter - 26.1 miles

Maximum Depth - 180 ft

Mean Depth - 59 ft

Lake Characteristics

Drag Lake is a fairly large waterbody, the bottom consisting of three basins. Water colour is blue-green and very clear, indicated by the disappearance of the secchi disc from view 21 ft from the surface. Susceptible to acid rain.

Fish Species Present

Lake trout, brook trout, lake herring, smallmouth bass, rock bass, longnose sucker, white sucker, pumpkinseed, fathead minnow, finescale dace, brook stickleback, golden shiner, common shiner.

Drag Lake is predominantly a lake trout - smallmouth bass fishery. Lake trout are taken during the ice fishing period by using minnows and jigging with artificial lures. Trolling is the usual way of catching lake trout during open water season. Small mouth bass are angled by means of still fishing and spin casting, usually along the rocky shoreline and in the shallower bays. Will be open Jan 1/02 for ice fishing. Slot size, check with MNR for current regulations.

Access

Drag Lake is located 8 km east of Haliburton on Hwy 121 and can be reached via Kenneway Rd. Boat launching sites are located at Kenneway Rd.

